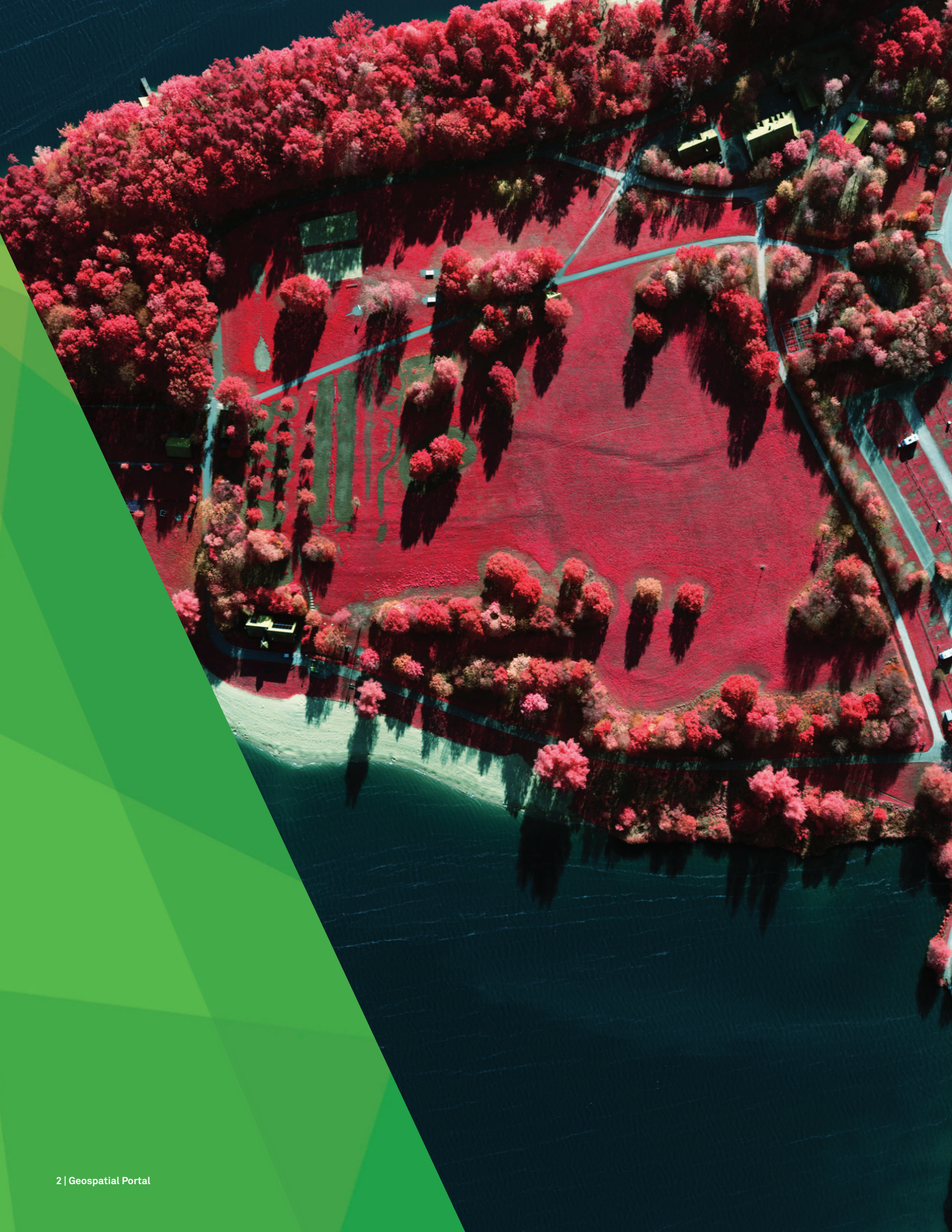




GEOSPATIAL PORTAL





GEOSPATIAL PORTAL

Geospatial Portal is a browser-based, multilingual web application that can be used for finding, viewing, querying, analyzing and consuming geospatial data and web services published by other Hexagon Geospatial solutions or third-party products. It offers advanced client-side discovery, connection, and interaction through a simple client geo-browser that provides an intuitive and attractive user experience. In addition, Geospatial Portal integrates multiple sources into a single 2D or 3D map view that can be easily navigated.

Geospatial Portal is offered within the PLATFORM SUITE of the Power Portfolio. The Platform Suite enables you to create your own unique application on top of a solid foundation of powerful geospatial functionality. Supported by robust toolkits, detailed instructions, and interactive developer communities, you can build custom web, mobile, and other smart enterprise solutions.

FLEXIBLE ACCESS

Geospatial Portal is powering the next generation of web applications, providing a far wider community with simple and interactive access to geospatial information using open web services. Its inherent flexibility enables it to connect to a variety of web services based on open standards and proprietary services. Those services can originate from Hexagon Geospatial products, other server technologies, or a combination of both. Geospatial Portal greatly optimizes the client browsing experience when connecting to Spatial Data Infrastructure (SDI) services.

MODERN NAVIGATION AND TOOLS

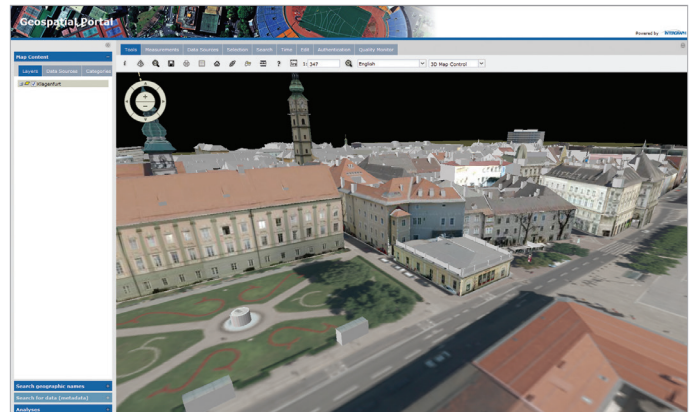
Geospatial Portal simplifies the process of finding, connecting to, and displaying spatial data published through web services and provides a modern and attractive user experience. It ensures smooth browsing through intuitive navigation controls and technical advances such as asynchronous communication that ensures panning and zooming are not interrupted by having to wait for servers to respond. The client's utility is enhanced by additional tools, such as area and distance measure, control of the appearance of individual map layers, and the ability to save and recall the favorite map contexts. Geospatial Portal supports accessing all web services and open standards required for a modern SDI client application.

EXCITING 3D EXPERIENCES

To better visualize your data in a real-world context and see it from a new perspective, Geospatial Portal provides a modern 3D view based on myVR technology. The globe view supports a base map and enables displaying numerous raster data sources from Web Map Service (WMS) or Web Map Tile Service (WMTS) services on top of 3D terrain. Using mTransformer tool, users can prepare 3D object models and terrain scenes for display in the Geospatial Portal. Vector data is also available in 3D mode and can be used to highlight 3D features and provide insight into attribute data via tooltips. Sunlight and shadow visualization provides a helpful analysis tool for urban planners.

MOBILE EXPERIENCES

Organizations with Geospatial Portal can create easy-to-use consumer websites based on the most recent technology stack that also supports mobile devices. A modern mobile user experience means simple, enhanced graphic design, cutting-edge technologies including HTML5 and CSS3, and exciting results with each click. Be anywhere and explore the world with the touch of your fingertips.



To better visualize your data in a real-world context and see it from a new perspective, Geospatial Portal now provides a modern, 3D view based on myVR technology, including rendering 3D objects.

SUPPORT FOR BUSINESS WORKFLOWS

When deployed with the new Workflow Manager, Geospatial Portal can be used to automate and organize typical business workflows of government agencies, utilities companies and other enterprise users. The Workflow Manager lets you construct highly-focused, attribute-based processes that can be made available in the browser and through Geospatial Portal.

EASY EDITING

Geospatial Portal facilitates the creation and update of attribute data. Supporting the editing workflow is the industry standard OGC WFS-T, used to edit/update/delete the features in the database.

GEOCODING AND LOCATION-BASED SEARCHES

Geospatial Portal offers robust search mechanisms out-of-the-box. Such mechanisms include geographic name and point-of-interest (POI) searches based on the gazetteer specification (OGC WFS-G) and geocoding search, for example via Open Location Service (OpenLS). The search capabilities can be customized using Geospatial Portal configuration.

MULTILINGUAL APPLICATION

Geospatial Portal is a multilingual application and comes localized to a variety of languages out-of-the-box. In addition, it is fully localizable so the list of languages can be extended. A unique feature of the Geospatial Portal is that it will follow your web browser language settings and attempt to run in that language.

ADVANCED MANAGEMENT AND DELIVERY OF SERVICES

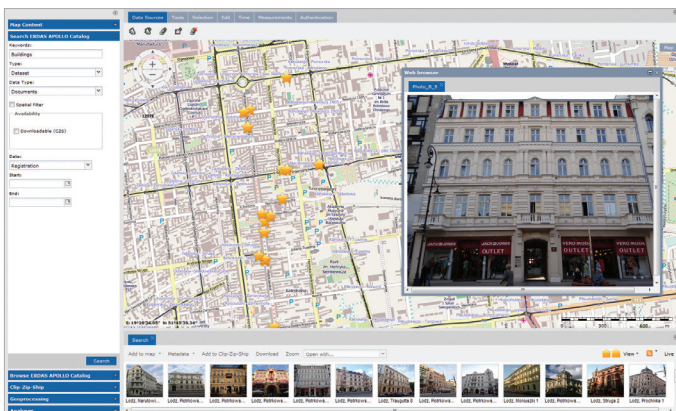
In addition to publishing services, Geospatial Portal provides tools for managing and monitoring of services performance. There are extensive configuration management tools used for configuration preparation. Extended context definition lets users and administrators preconfigure a constellation of services and create predefined maps that are composed from available services.

CUSTOMIZE AND EXTEND

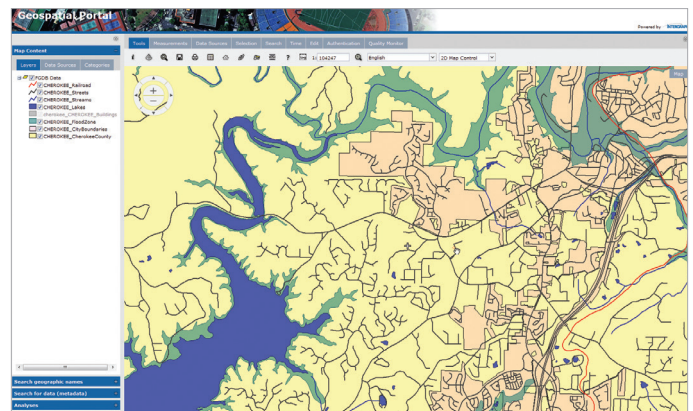
A powerful Geospatial Portal Software Development Kit (SDK) enables creation of customized portal workflows and experiences using extensive APIs, documentation, and examples. The SDK can also be used in conjunction with other Hexagon Geospatial server products that include Geospatial Portal as the client application, including GeoMedia WebMap and ERDAS APOLLO.

FULL SDI OFFERING

Hexagon Geospatial SDI solutions support geospatial industry standards, including those from ISO and OGC, as well as pan-European or government initiatives such as INSPIRE, U.S. National SDI, Canadian Geospatial Data Infrastructure, and the United Nations SDI. Geospatial Portal enables organizations to collaborate internally with government agencies, commercial businesses, and the public – all while adhering to government mandates to ensure users have access to authoritative data.



The ERDAS APOLLO catalog can deliver business data, like photos and documents, right to your web application. Move the map and search results update automatically. Click on points in the map to open business data from ERDAS APOLLO in browser windows.



Break down the walls of proprietary services by building web sites and web services that natively access Esri File Geodatabase (FGDB) geospatial data, along with many other data types.

Geospatial Portal supports development of INSPIRE SDIs by smooth cooperation with INSPIRE discovery, view, download, and transformation services. It also supports control of the INSPIRE infrastructure with the results of the monitoring process shown on the map or in tabular form. The detailed information on a particular service and its performance is also presented as a pie chart.

SUPPORTED OGC AND INSPIRE SPECIFICATIONS

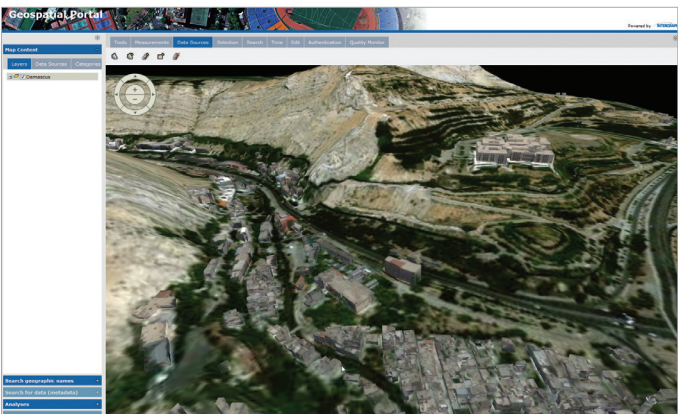
[WMS 1.3.0 [time dimension], WMS 1.1.1 [time dimension], WMTS 1.0.0, WFS 1.1.0, WFS 2.0.0, WFS(G) AP 1. 0, CSW 2.0.2, ISO AP 1.0, WCTS 0.3.0, OpenLS [OLS] 1.1, WMC 1.1, GeoRSS, FE 1.1, GML 3.2.1, INSPIRE View Service, INSPIRE Discovery Service, INSPIRE Direct Access Download Service and INSPIRE Coordinate Transformation Service (WPS-CT).

A VITAL COMPONENT OF THE PORTFOLIO

Geospatial Portal is the integrated client supporting all browser-based geospatial server products in the product portfolio.

JOIN THE COMMUNITY

To better support extending and customizing the Geospatial Portal platform by our large, global development community, we provide the means for these experience-builders to connect with each other, share knowledge and ultimately build better solutions. Participate in a community forum that provides you access to the most recent information on the SDK, APIs and code samples coming from product team and other developers globally.



Geospatial Portal includes a 3D globe capable of rendering base map, terrain, and numerous other data sources in 3D, including those from ERDAS APOLLO and GeoMedia WebMap.

POWER PORTFOLIO	PRODUCT & INTERACTION
PROVIDER SUITE	ERDAS APOLLO rapidly delivers imagery based on ultra-fast ECWP streaming protocol directly into Geospatial Portal.
	Connect to ERDAS APOLLO for 2D/3D viewing, catalog search and browse, download and creation of value-added data products on demand.
PLATFORM SUITE	GeoMedia WebMap utilizes Geospatial Portal as an integrated web client for web map publishing.
	Geospatial Portal SDK enables creation of customized portal workflows and experiences using extensive APIs, documentation, and examples.
	Geospatial Portal complies with ISO/OGC standards and enables INSPIRE services to support secure and compliant access of web services delivered by Geospatial SDI





ABOUT POWER PORTFOLIO

The Power Portfolio from Hexagon Geospatial combines the best photogrammetry, remote sensing, GIS and cartography technologies available. Flowing seamlessly from the desktop to server-based solutions, these technologies specialize in data organization, automated geoprocessing, spatial data infrastructure, workflow optimization, web editing, and web mapping.

The Platform Suite enables you to efficiently build and deploy smart solutions that fit your needs.



ABOUT HEXAGON GEOSPATIAL

Hexagon Geospatial helps you make sense of the dynamically changing world. Known globally as a maker of leading-edge technology, we enable our customers to easily transform their data into actionable information, shortening the lifecycle from the moment of change to action. Hexagon Geospatial provides the software products and platforms to a large variety of customers through direct sales, channel partners, and Hexagon businesses. For more information, visit www.hexagongeospatial.com or contact us at marketing@hexagongeospatial.com.

Hexagon Geospatial is part of Hexagon, a leading global provider of information technologies that drive quality and productivity improvements across geospatial and industrial enterprise applications. Hexagon's solutions integrate sensors, software, domain knowledge and customer workflows into intelligent information ecosystems that deliver actionable information, automate business processes and improve productivity. They are used in a broad range of vital industries. Hexagon (Nasdaq Stockholm: HEXA B) has more than 15,000 employees in 46 countries and net sales of approximately 3.1bn USD. Learn more at hexagon.com.

© 2016 Hexagon AB and/or its subsidiaries and affiliates. All rights reserved. Hexagon and the Hexagon logo are registered trademarks of Hexagon AB or its subsidiaries. All other trademarks or servicemarks used herein are property of their respective owners. Hexagon Geospatial believes the information in this publication is accurate as of its publication date. Such information is subject to change without notice.