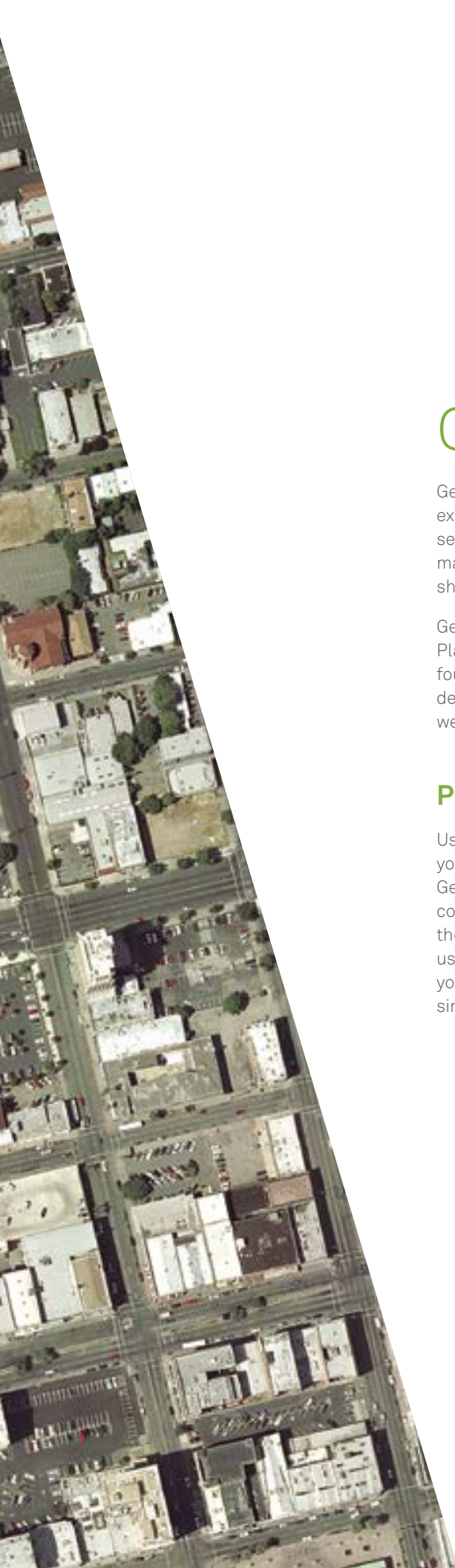




GEOMEDIA® WEBMAP







GEOMEDIA® WEBMAP

GeoMedia WebMap supports a broad range of customers who need to visualize and examine geographic data on the Web. From easily creating standards-compliant web services to providing sophisticated visualization and analysis within interactive web mapping applications, GeoMedia WebMap enables building powerful solutions for sharing your organization's rich geospatial data.

GeoMedia WebMap is offered within the Platform Suite of the Power Portfolio. The Platform Suite enables you to create your own unique application on top of a solid foundation of powerful geospatial functionality. Supported by robust toolkits, detailed instructions, and interactive developer communities, you can build custom web, mobile, and other smart enterprise solutions.

PUBLISH MAPS WITH THE CLICK OF A MOUSE

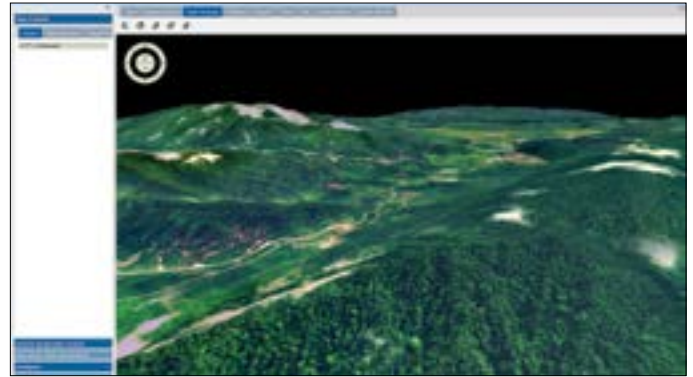
Using GeoMedia® as a visual authoring environment, GeoMedia WebMap allows you to publish high-performance web applications with a simple click of a mouse. GeoMedia WebMap enables direct development of interactive web maps using the configuration and application creation tools provided in GeoMedia itself, eliminating the need for programming. Configure the layout of your front-end interface, create user-defined queries and other components, and provide direct, real-time access to your geospatial data. Users can view, query, and analyze multiple geospatial formats simultaneously, with no pre-publishing or translation required.



WebMap Publisher is built into the Geospatial Portal to provide easy web application creation from a GeoMedia GeoWorkspace.

REAL-WORLD BENEFITS WITH GEOMEDIA WEBMAP

- Bring the power of geospatial processing to the web
- Maximize the value of your geographic information
- Give your users fast and easy access to your geospatial data and functionality
- Access and analyze data anywhere and anytime
- Improve productivity
- No programming expertise required
- Based on industry standards
- Proven performance scalability model
- Create your own custom web application



Geospatial Portal provides a 3D globe capable of rendering base maps, terrain, and numerous other data sources in 3D, including those from GeoMedia WebMap.

POWERFUL VISUALIZATION CAPABILITIES

GeoMedia WebMap utilizes Geospatial Portal as an integrated web client for web map publishing, and also as the front end for users to view, analyze, capture, and update geospatial information in 2D or 3D. WebMap Publisher is built into the Geospatial Portal and provides easy web application creation from a GeoMedia GeoWorkspace. Use GeoMedia WebMap Essentials to publish powerful websites with a simplified version of Geospatial Portal. The Advantage and Professional tiers of the GeoMedia WebMap package unlock the full functionality of the Geospatial Portal.

ADVANCED 3D CAPABILITIES

The powerful display of 3D data based on myVR technology is available out of the box in all websites powered by GeoMedia WebMap and its web client, Geospatial Portal. Using mTransformer, users can prepare 3D objects and terrain scenes for 3D visualizations, and also use other raster data sources such as WMS or WMTS on top of the terrain. Vector data is available in 3D mode and can be used to highlight 3D features as well as provide insight into attribute data via tooltips. Sunlight and shadow visualization provides a helpful analysis tool for urban planners.

SUPPORT FOR BUSINESS WORKFLOWS

When deployed with the Workflow Manager, GeoMedia WebMap can be used to automate and organize typical business workflows of government agencies, utilities companies and other enterprise users. The Workflow Manager lets you construct highly-focused, attribute-based processes that can be made available in the browser and through Geospatial Portal.

CUSTOMIZE AND EXTEND

A powerful Geospatial Portal SDK enables creation of customized portal workflows and experiences using extensive APIs, documentation, and examples. The server side APIs can also be used to build extensive web applications based on GeoMedia objects.

ROBUST WEB SERVICE SUPPORT

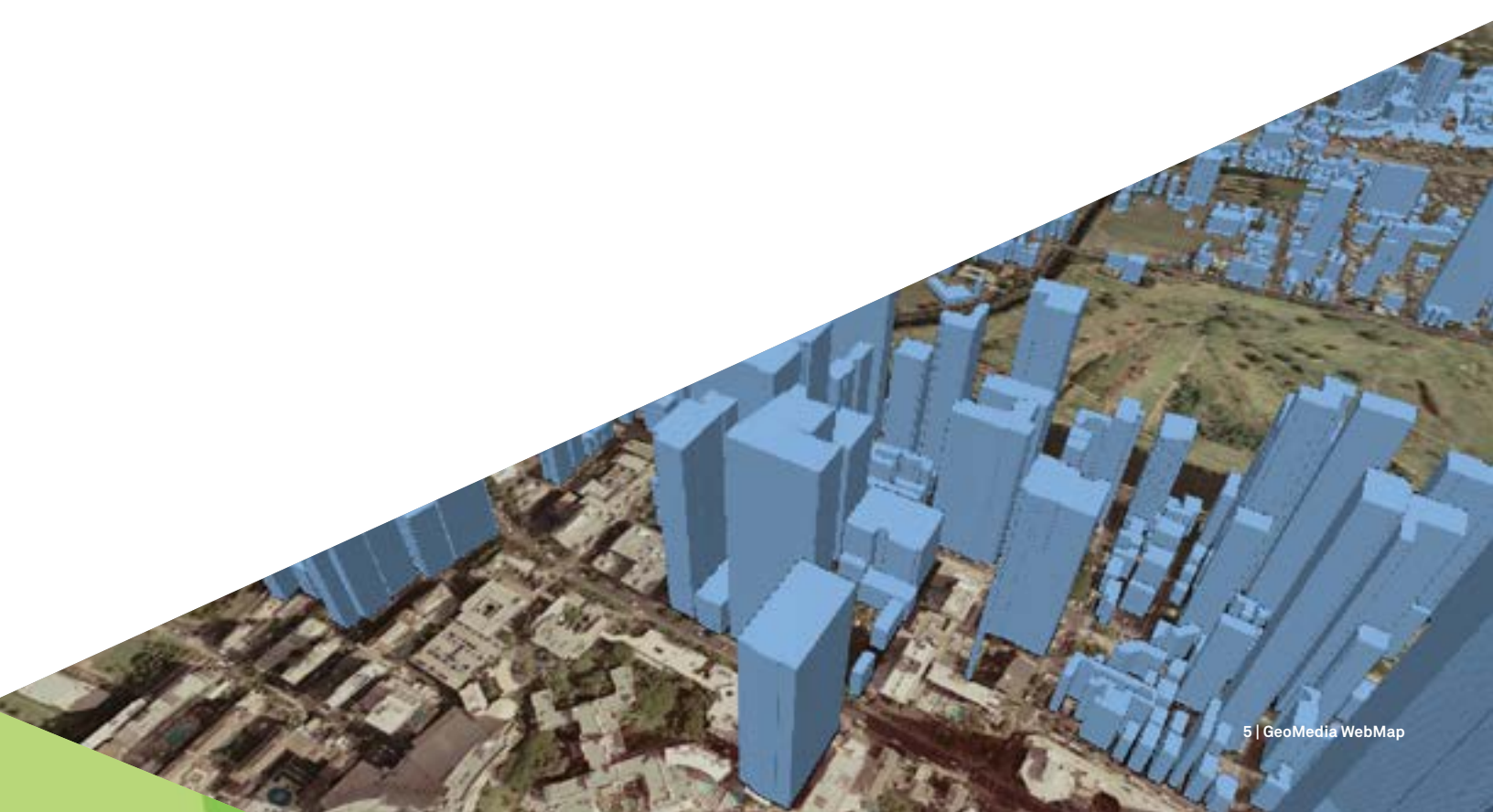
Support for web service industry standards—including OGC, INSPIRE, and XML—gives you access to industry standard web tools. Deliver data with ease into client applications using GeoMedia WebMap's industry-defined web services, including OGC WMS (Web Map Service), OGC WFS (Web Feature Service), and OGC WMTS (Web Map Tile Service). Web services for query and map generation, feature manipulation, routing, address geocoding, and catalog query leverage the power of the web in the mapping environment.

EASY EDITING

GeoMedia WebMap allows you to perform the whole lifecycle of data, from capturing new data to viewing and analyzing existing data, and then to updating and modifying that data based on your analysis. Capture spatial data in accordance with a central data model and write it directly to Microsoft® Access, SQL Server®, or Oracle®. GeoMedia WebMap also facilitates the creation and update of attribute information. Editing capabilities available in the Advantage and Professional tiers are implemented within Geospatial Portal, providing one powerful editing workflow. The industry standard, OGC WFS-T, is used to edit/update/delete the features in the database.

IN-DEPTH QUERY CAPABILITIES

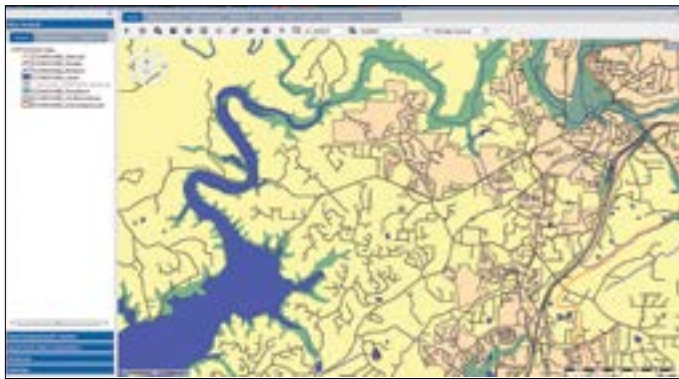
With real-time links to GIS data warehouses, your end users can perform various types of spatial and attribute queries. Click on a map feature to see database information and export the results to other applications. Simple interfaces make it easy to quickly navigate through large quantities of information. GeoMedia WebMap provides the performance needed to serve all the clients of your Web application, especially as demand increases.



COMPLEX SPATIAL ANALYSIS

GeoMedia WebMap offers powerful analysis functions which can be used individually or in combination. General analysis tools include buffer zoning, spatial intersection, spatial difference, analytical merge, aggregation, join, geocoding, reverse geocoding, and functional attributes.

More sophisticated GeoMedia WebMap users may perform analyses such as route analysis (including OpenLS routing), proximity analysis, and area allocation. GeoMedia WebMap also enables end users to conduct dynamic segmentation and linear analysis quickly and easily over the web. Dynamic segmentation is a powerful tool for analyzing tabular data that references linear features on a map, and enables you to visualize your inventory of assets more clearly than you can by just reviewing columns of data.



Break down the walls of proprietary services by building web sites and web services that natively access Esri File Geodatabase (FGDB) geospatial data, along with many other data types.

SERVER ADMINISTRATION

A high-performance administration component is critical to manage administration of true enterprise applications. GeoMedia WebMap allows you to administer your web applications via an integrated, web based administration console. From the same, simple GUI based on Workflow Manager, administrators can manage their servers and web services, as well as websites available on those servers. Additional server configuration parameters may be modified, and websites/web services can be tested real-time with the click of a button in the Administration Console.

A VITAL COMPONENT OF THE PORTFOLIO

GeoMedia WebMap connects to products across the Power Portfolio, providing a seamless solution to geo-enable your enterprise.

POWER PORTFOLIO	PRODUCT & INTERACTION
PRODUCER SUITE	Use GeoMedia® as a visual authoring environment to publish high-performance web applications with a simple click of a mouse.
PROVIDER SUITE	Rapid ECWP imagery streaming protocol from ERDAS APOLLO delivers raster backdrops to complement GeoMedia WebMap's rich GIS capabilities.
PLATFORM SUITE	Geospatial Portal is the fully integrated web client providing the ability to view, analyze, capture, and update geospatial information in 2D or 3D.
	Workflow Manager enables form-based, task specific workflows for the browser that primarily support attributive data but also may contain a spatial component.
	Geospatial SDI extends solutions based on GeoMedia WebMap with controlled access to standard compliant services.
	Provide access to a wider variety of data types and on-the-fly coordinate transformation capabilities for GeoMedia Smart Client.

JOIN THE HEXAGON GEOSPATIAL COMMUNITY

The [Hexagon Geospatial Community](#) is the place to go for in-depth information that will help you get the most out of your Hexagon Geospatial products. The Community provides eTraining, knowledge articles, discussion forums, blogs, release information and more! Registration is free, so sign up today to start taking advantage of all the Community has to offer.

In addition to the Community, a subscription to the Hexagon Geospatial Developer Network gives you access to code samples, ideas forum, APIs, SDKs and toolkits you can use to customize your Power Portfolio products or build your own solutions on the Hexagon Geospatial platform. Visit the [M.App Exchange](#) to subscribe.

ABOUT POWER PORTFOLIO

The Power Portfolio from Hexagon Geospatial combines the best photogrammetry, remote sensing, GIS and cartography technologies available. Flowing seamlessly from the desktop to server-based solutions, these technologies specialize in data organization, automated geoprocessing, spatial data infrastructure, workflow optimization, web editing, and web mapping.

The Platform Suite enables you to efficiently build and deploy smart solutions that fit your needs.



ABOUT HEXAGON GEOSPATIAL

Hexagon Geospatial helps you make sense of the dynamically changing world. Known globally as a maker of leading-edge technology, we enable our customers to easily transform their data into actionable information, shortening the lifecycle from the moment of change to action. Hexagon Geospatial provides the software products and platforms to a large variety of customers through direct sales, channel partners, and Hexagon businesses. For more information, visit www.hexagongeospatial.com or contact us at marketing@hexagongeospatial.com.

Hexagon Geospatial is part of Hexagon, a leading global provider of information technologies that drive quality and productivity improvements across geospatial and industrial enterprise applications. Hexagon's solutions integrate sensors, software, domain knowledge and customer workflows into intelligent information ecosystems that deliver actionable information, automate business processes and improve productivity. They are used in a broad range of vital industries. Hexagon (Nasdaq Stockholm: HEXA B) has more than 15,000 employees in 46 countries and net sales of approximately 3.1bn USD. Learn more at hexagon.com.

© 2016 Hexagon AB and/or its subsidiaries and affiliates. All rights reserved. Hexagon and the Hexagon logo are registered trademarks of Hexagon AB or its subsidiaries. All other trademarks or servicemarks used herein are property of their respective owners. Hexagon Geospatial believes the information in this publication is accurate as of its publication date. Such information is subject to change without notice.