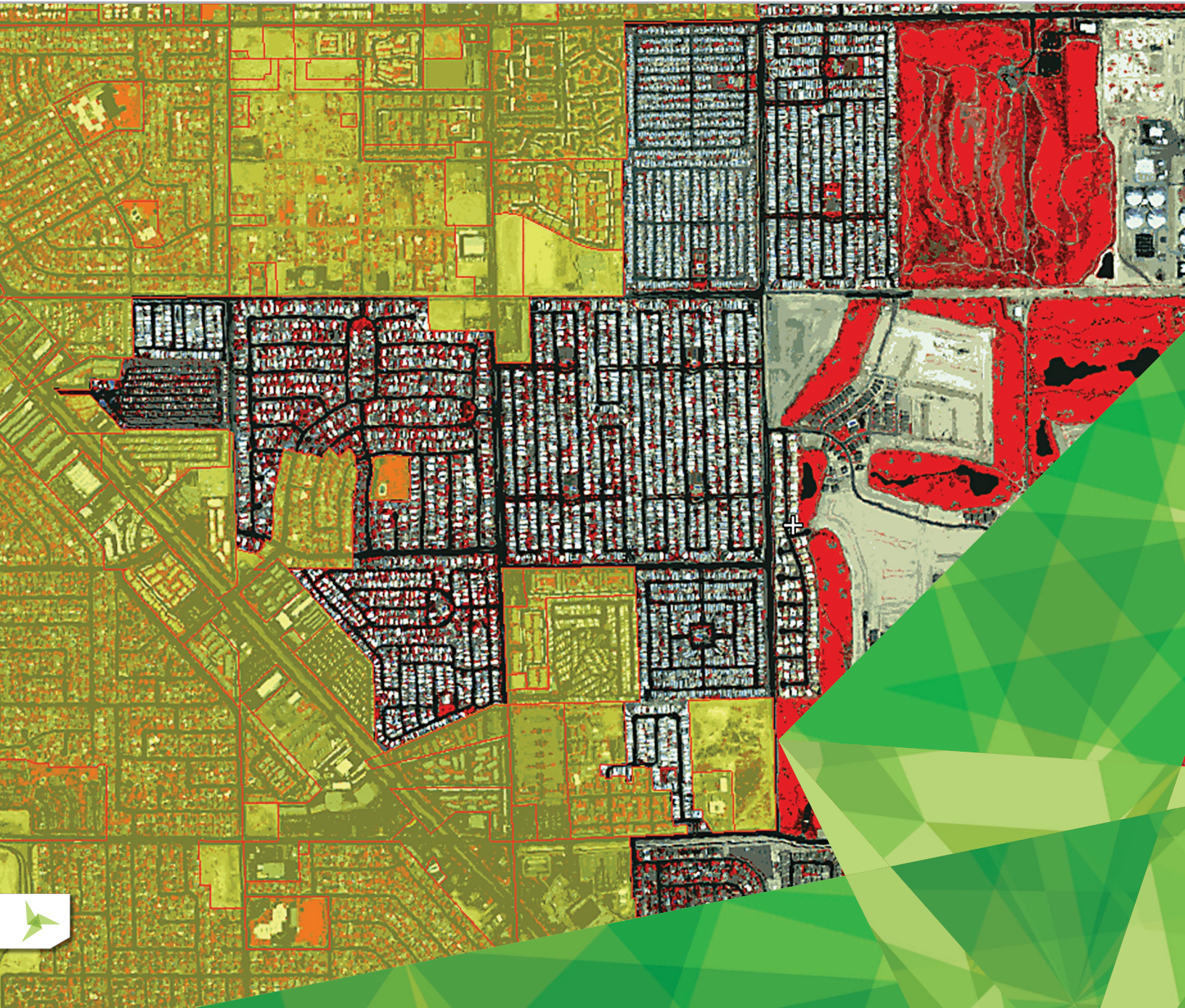




ERDAS APOLLO

MANAGING AND SERVING GEOSPATIAL INFORMATION







ERDAS APOLLO

Do you have large volumes of geospatial information, regularly updated data stores, and a distributed user base? Do you need a single, integrated enterprise-class, spatial data infrastructure? Is your image delivery performance fast and efficient enough for you?

ERDAS® APOLLO provides comprehensive data management and delivery. This includes organizing geospatial and business data into a centralized library, and distributing that data from the cloud or on-premise. Complete with a variety of delivery options, ERDAS APOLLO consistently delivers geospatial data faster and with less hardware than competing server-based products. Implementing an out-of-the-box, service-oriented architecture (SOA), ERDAS APOLLO can be customized and extended to satisfy both your geospatial and business process requirements.

ERDAS APOLLO is offered within the PROVIDER SUITE® of the Power Portfolio®. The Provider Suite allows you to easily store, discover, manage and deliver your data across desktop, web and mobile applications. It also alleviates pressures associated with expanding imagery data holdings through the optimization of disk space requirements.

AUTOMATIC ORGANIZATION

Centralize your geospatial information metadata with scheduled crawling and harvesting of regularly updated data holdings. ERDAS APOLLO enables powerful workflows for describing, styling, securing, cataloging, and publishing geospatial and non-spatial data in the enterprise. After cataloging the data, end users can then easily perform in-depth searches on the catalog using powerful metadata and spatial search tools within the Geospatial Portal.

A HOST OF DELIVERY OPTIONS

ERDAS APOLLO provides the greatest flexibility for geospatial data delivery, enabling dissemination into any client, on any device. Distribution can occur in a variety of ways, including through a host of OGC standard web services, tile delivery, streaming, download and even the ability to clip, zip and ship data via email and ftp. Even large LIDAR datasets managed within ERDAS APOLLO can be streamed to end users on any device.

FASTEST IMAGE DELIVERY POSSIBLE

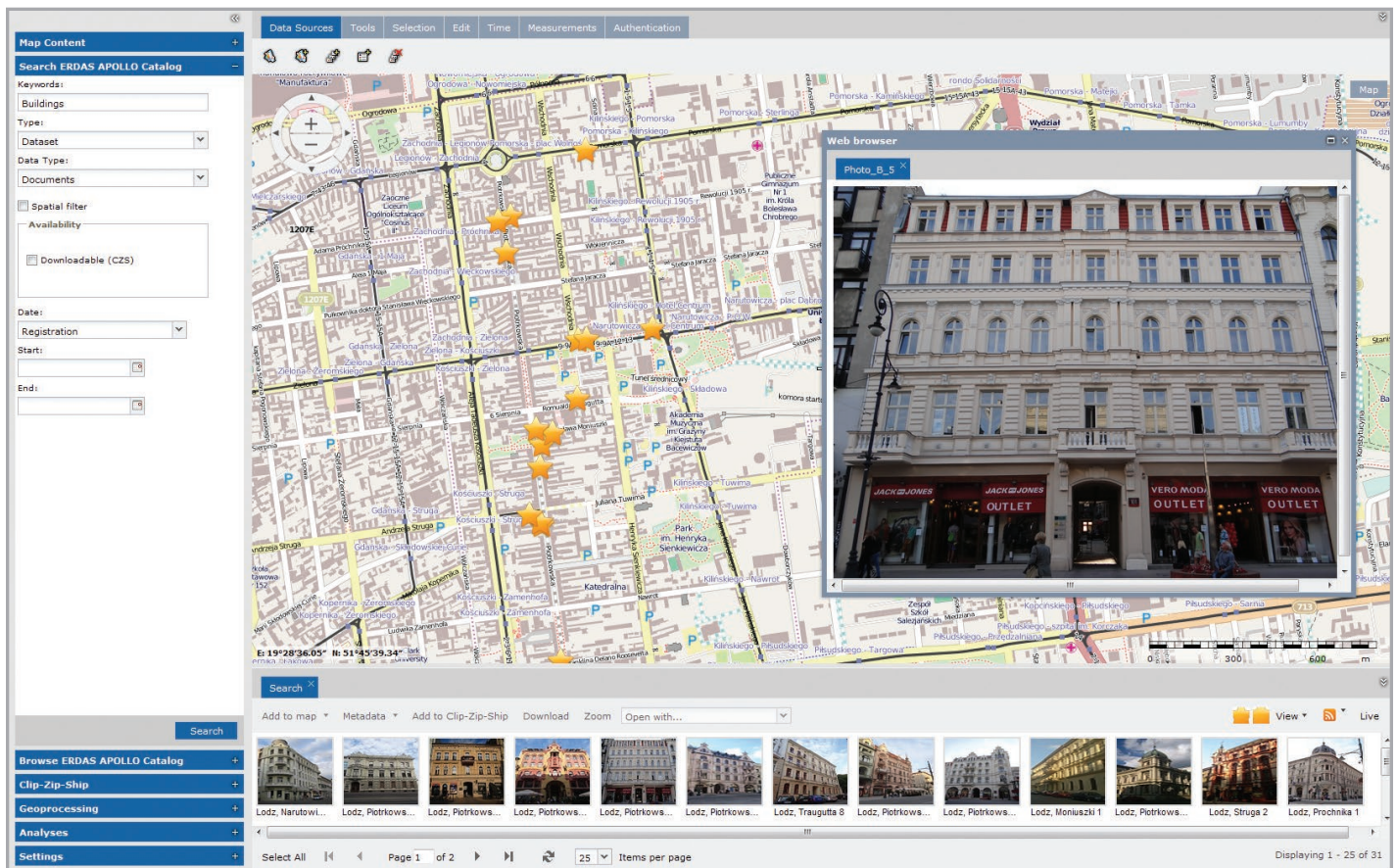
ERDAS APOLLO includes the fastest image delivery system on the market: the high-performance streaming imagery protocol ECWP. ECWP allows you to serve over 5,000 clients with a single server. If you prefer, ERDAS APOLLO also supports the tiled delivery of data. In comparison benchmarks, ERDAS APOLLO consistently delivers more data, more quickly, using less hardware than other image serving products. ERDAS APOLLO supports common industry standards for image deployment, including Esri's GeoServices protocol and OpenGIS™ Web Map service specifications.

COMPLETELY INTEROPERABLE

ERDAS APOLLO embraces OGC services as a primary, native implementation for accessing data. This ensures the greatest interoperability and flexibility when combining ERDAS APOLLO into your current workflows.



ERDAS APOLLO provides the greatest flexibility for geospatial data delivery, enabling dissemination into any client, on any device.



The ERDAS APOLLO catalog can deliver business data such as photos and documents right to your web application. Move the map and search results update automatically. Click on points in the map to open business data from ERDAS APOLLO in browser windows.

SERVER-SIDE GEOPROCESSING

Traditional solutions for running spatial models like change detection and site analysis tend to rely on a small number of data analysts. These experts use rich client software to respond to individual requests from end users, and many times are working from a backlog. ERDAS APOLLO empowers many more end users at the organization to create value-added data products by themselves, with no need to learn new software.

FLEXIBLE DEPLOYMENT

Organizations want a deployment model that is simple, flexible and fits their needs and budget. Enjoy the option of implementing your ERDAS APOLLO solution where it makes sense for you: on-premise or on the cloud.

LEVERAGES EXISTING ENTERPRISE SYSTEMS

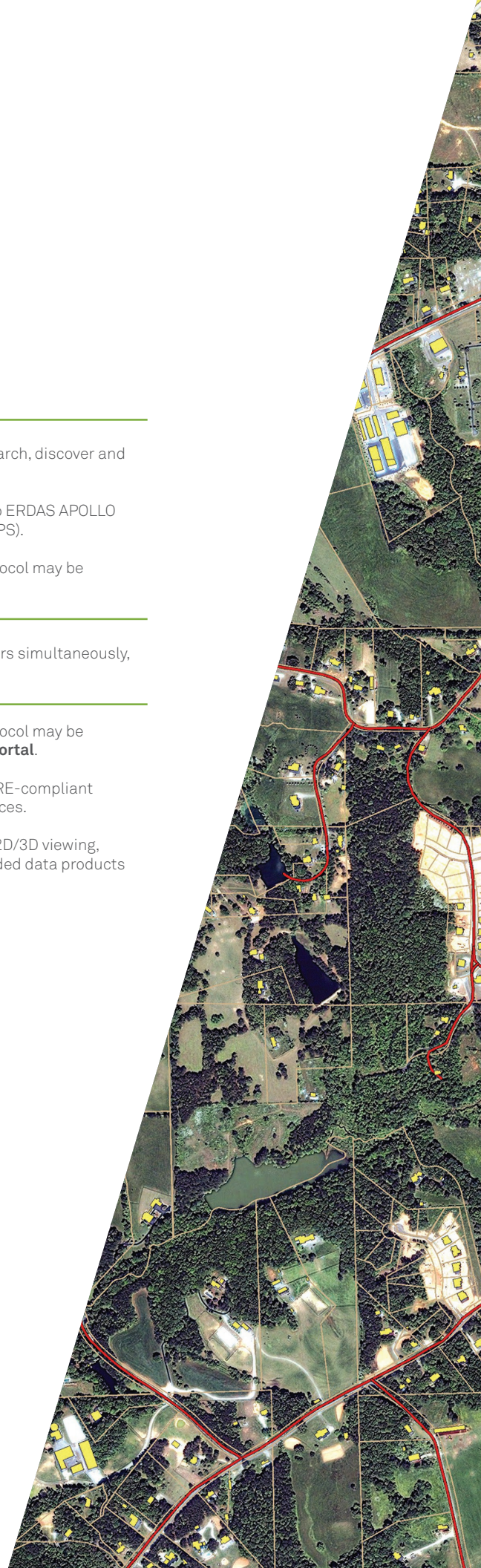
ERDAS APOLLO is a highly flexible solution, easily integrating with other GIS environments. It leverages existing business systems, such as Oracle®, Microsoft® SQL Server and PostgreSQL databases, for persisting intelligent metadata and application specific information. Proven IT standards such as Java EE and REST integrate ERDAS APOLLO into existing business environments, also meeting an organization's security requirements.

ONE CONNECTED SOLUTION

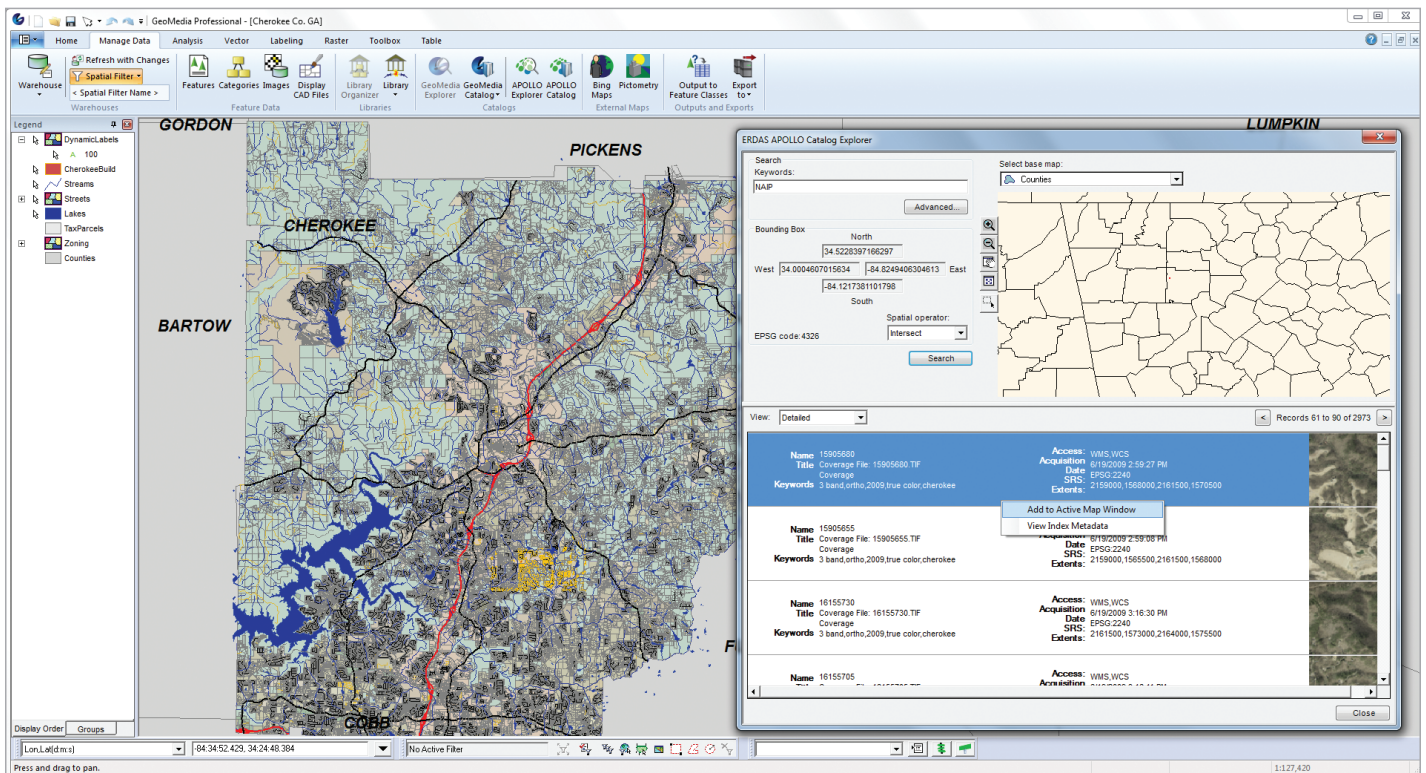
ERDAS APOLLO connects the entire geospatial Power Portfolio of products to comprise a seamless, complete solution to geo-enable your enterprise.

Power Portfolio	Product & Interaction
PRODUCER SUITE	<p>Use the catalog explorer in ERDAS IMAGINE or GeoMedia to search, discover and view data from ERDAS APOLLO directly in the map window.</p> <p>Spatial models created in ERDAS IMAGINE may be published to ERDAS APOLLO and delivered over the Internet as server-side geoprocesses (WPS).</p> <p>Raster backdrops based on the ultra-fast ECWP streaming protocol may be directly consumed in ERDAS IMAGINE.</p>
PROVIDER SUITE	<p>Serve ECW-compressed data lightning fast to thousands of users simultaneously, from a standard server.</p>
PLATFORM SUITE	<p>Raster backdrops based on the ultra-fast ECWP streaming protocol may be directly consumed in GeoMedia Smart Client and Geospatial Portal.</p> <p>Geospatial SDI façades provide OGC® (CSW ISO AP) and INSPIRE-compliant discovery of catalog records on top of ERDAS APOLLO web services.</p> <p>Geospatial Portal is the fully integrated web client supporting 2D/3D viewing, catalog search and browse, download and creation of value-added data products on demand.</p>

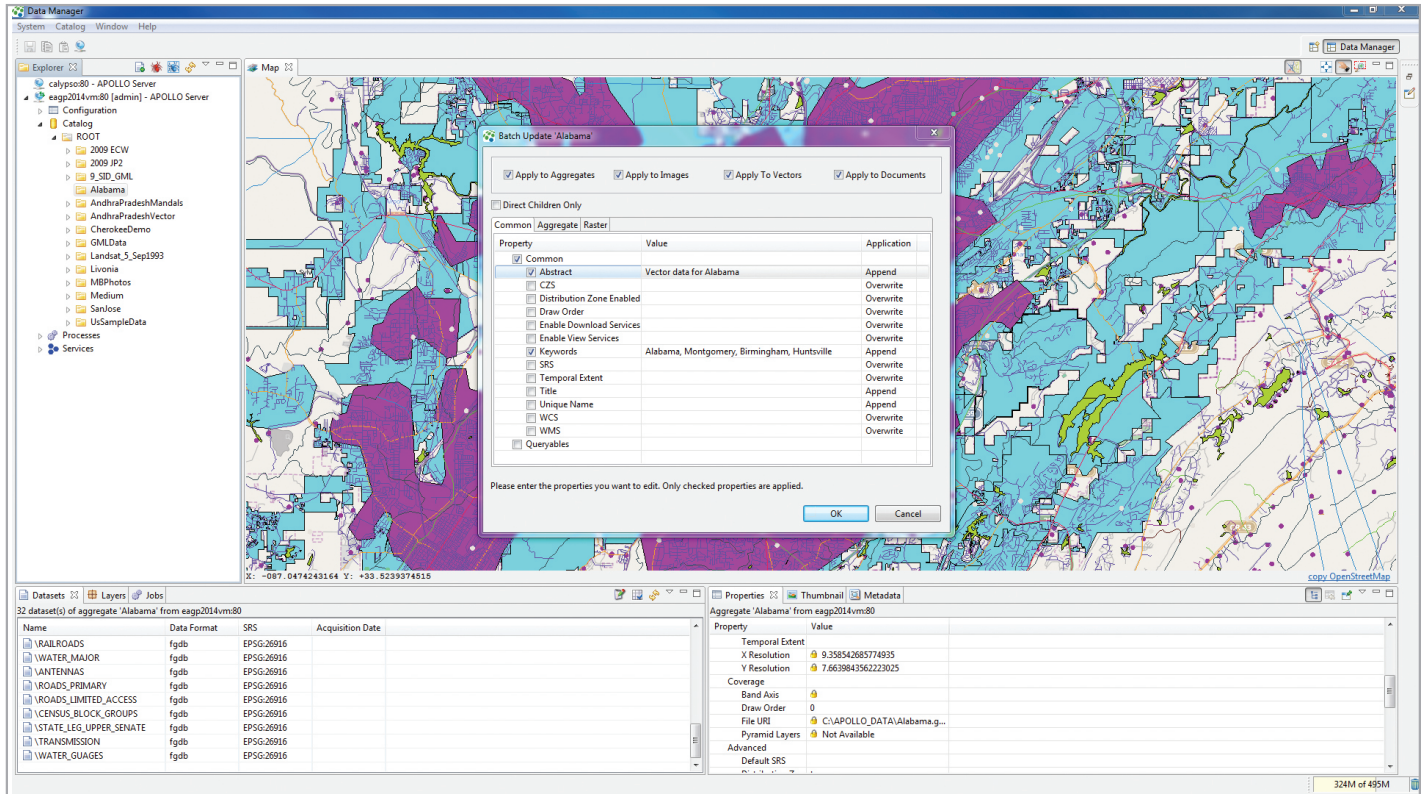
Raster backdrops based on the ultra-fast ECWP streaming protocol may be directly consumed in GeoMedia Smart Client and Geospatial Portal.







Use GeoMedia to access, search, and consume data from the ERDAS APOLLO catalog.



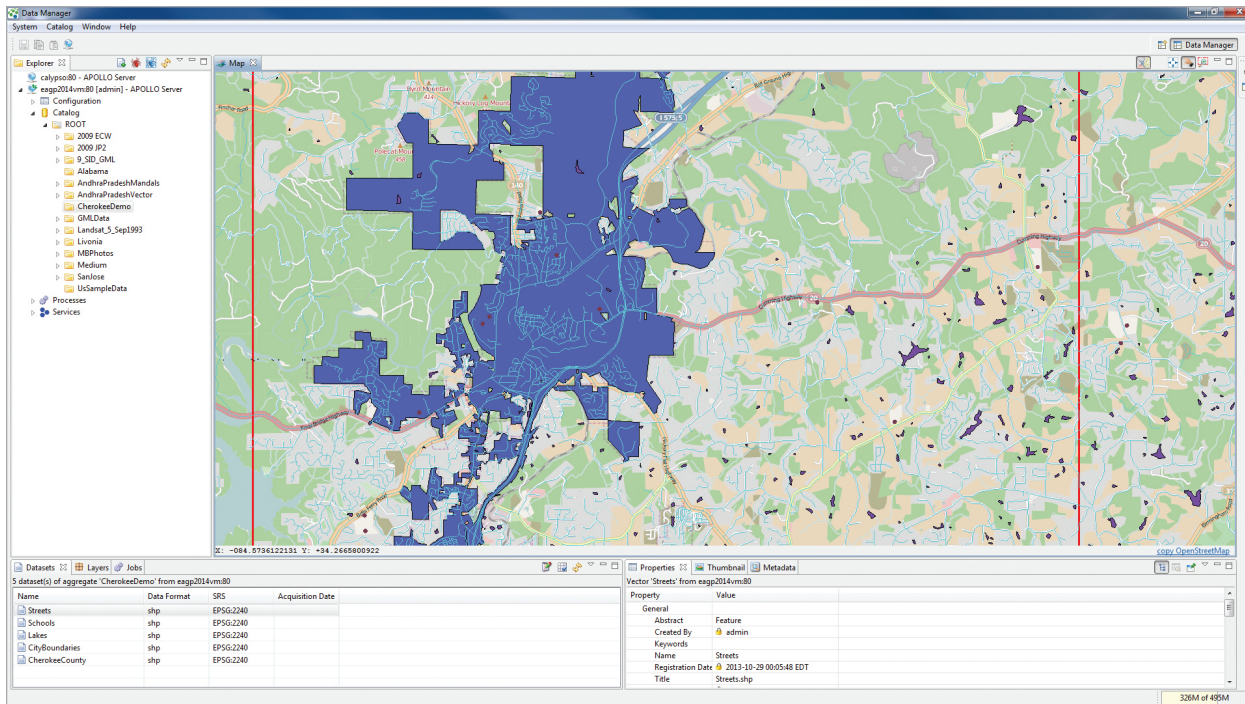
Batch edit metadata and propagate changes down a hierarchy of subfolders using the ERDAS APOLLO Data Manager.

FLEXIBLE OFFERING

Available in three product tiers, ERDAS APOLLO suits a wide spectrum of organizations – from those that simply need a very low-cost, remarkably fast image server to those requiring a comprehensive data management system. All three tiers offer remarkably fast performance, even when handling massive data archives and thousands of users.

ERDAS APOLLO ESSENTIALS

Government organizations that need to rapidly share geospatial imagery via a public access website can easily do this with ERDAS APOLLO Essentials. This unique product provides high-speed access to large volumes of imagery on a minimum hardware set. The solution can distribute massive amounts of data to thousands of users simultaneously, all from a single server.



ERDAS APOLLO Advantage comprehensively catalogs ALL of your data – including vector (GML, Shapefile, FGDB), point clouds, imagery, and ancillary business data – all in a single crawler. Harvest, catalog, secure, and publish all data types the same way.

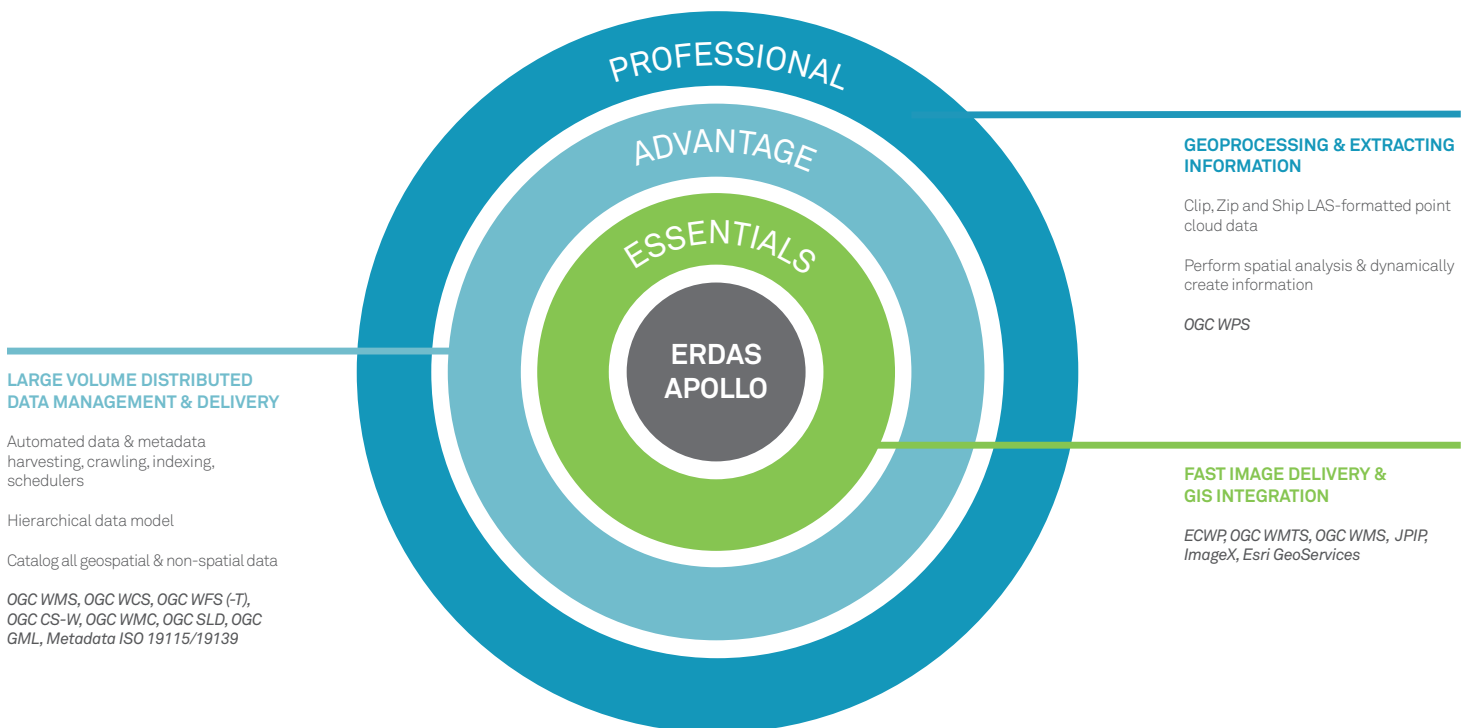
ERDAS APOLLO ADVANTAGE

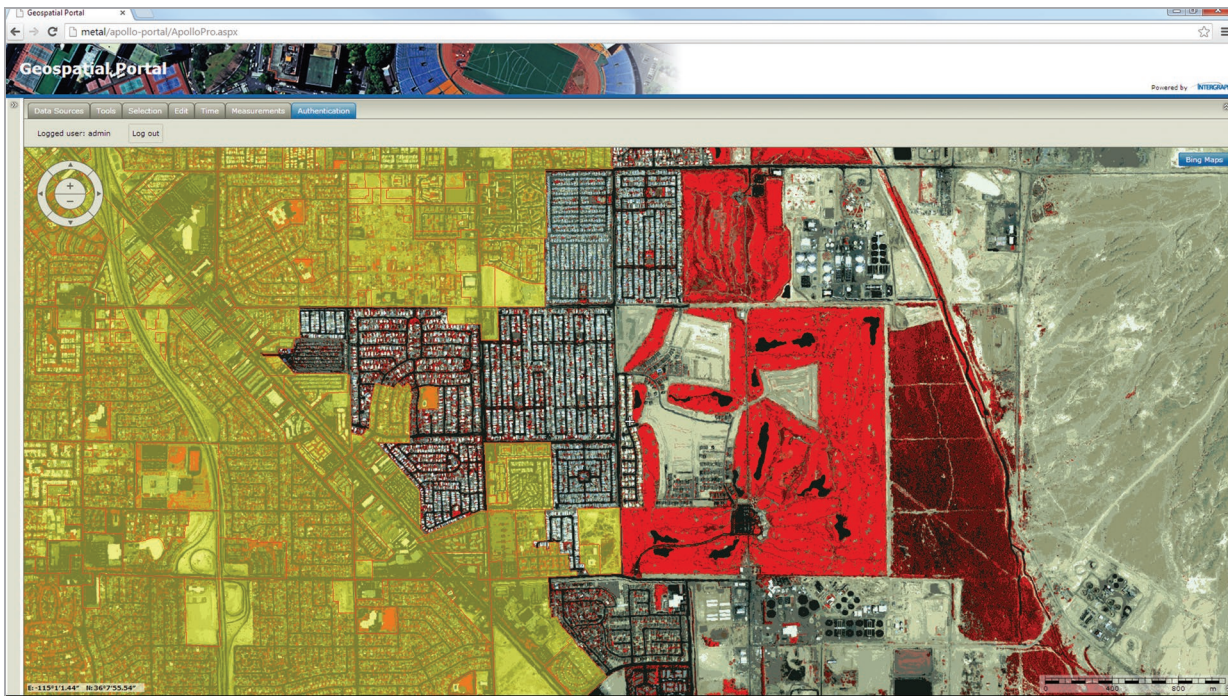
Many users cannot find the geospatial and non-spatial information they need when they need it. Data is often buried in workgroups or it lacks descriptive metadata. Organizations that require interoperable management and delivery of massive amounts of imagery, LiDAR, vector, and also non-spatial data across the enterprise need ERDAS APOLLO Advantage. With ERDAS APOLLO Advantage, geospatial data that is distributed across multiple departments or offices can be easily organized and disseminated in a variety of ways, including web services, direct downloads or clip, zip, and ship. This way, end users can ultimately search, discover, and visualize data in a variety of applications.

Organizations that benefit from ERDAS APOLLO Advantage include national mapping agencies large federal organizations, police forces, Defense, DOT/infrastructure, surveillance, disaster/emergency response, and homeland security.

ERDAS APOLLO PROFESSIONAL

ERDAS APOLLO Professional provides server-side geoprocessing of geospatial data and offers a powerful geoprocessing (WPS) component, unrivaled in complex algorithms. Using ERDAS IMAGINE®, geospatial analysts create custom models and publish them to the ERDAS APOLLO catalog. These spatial models can then be made accessible and executable by consumer users, on demand, from a thin client front end.





Rasters are served with lightning speed with ERDAS APOLLO.



Available in three product tiers, ERDAS APOLLO suits ...those that simply need a very low-cost, remarkably fast image server to those requiring a comprehensive data management system.



ABOUT POWER PORTFOLIO

The Power Portfolio® from Hexagon Geospatial combines the best photogrammetry, remote sensing, GIS and cartography technologies available. Flowing seamlessly from the desktop to server-based solutions, these technologies specialize in data organization, automated geoprocessing, spatial data infrastructure, workflow optimization, web editing, and web mapping.

The Provider Suite® enables you to comprehensively manage and deliver volumes of geospatial and business data.



ABOUT HEXAGON GEOSPATIAL

Hexagon Geospatial helps you make sense of the dynamically changing world. Known globally as a maker of leading-edge technology, we enable our customers to easily transform their data into actionable information, shortening the lifecycle from the moment of change to action. Hexagon Geospatial provides the software products and platforms to a large variety of customers through direct sales, channel partners, and Hexagon businesses. For more information, visit www.hexagongeospatial.com or contact us at marketing@hexagongeospatial.com.

Hexagon Geospatial is part of Hexagon, a leading global provider of information technologies that drive quality and productivity improvements across geospatial and industrial enterprise applications. Hexagon's solutions integrate sensors, software, domain knowledge and customer workflows into intelligent information ecosystems that deliver actionable information, automate business processes and improve productivity. They are used in a broad range of vital industries. Hexagon (Nasdaq Stockholm: HEXA B) has more than 15,000 employees in 46 countries and net sales of approximately 3.1bn USD. Learn more at hexagon.com.

© 2017 Hexagon AB and/or its subsidiaries and affiliates. All rights reserved. Hexagon and the Hexagon logo are registered trademarks of Hexagon AB or its subsidiaries. All other trademarks or servicemarks used herein are property of their respective owners. Hexagon Geospatial believes the information in this publication is accurate as of its publication date. Such information is subject to change without notice.